

# TENDER BULLETIN

NO.28 OF 2019/20 FY  
REF: 10/3/6/5

18 OCTOBER 2019



# LIMPOPO

**PROVINCIAL GOVERNMENT**  
REPUBLIC OF SOUTH AFRICA

Bid documents may also be obtained for free from:  
[www.etenders.gov.za](http://www.etenders.gov.za)

# Provincial Supply Chain Management Office

## TABLE OF CONTENTS

	<b>Page No.</b>
1. REPORTING FRAUDULENT AND CORRUPT ACTIVITIES.....	03
2. INSTRUCTIONS.....	04
3. BID INVITATION.....	05-06
4. CANCELLED BIDS.....	07-08
5. ERRATUM.....	09-10
6. AWARDED BIDS.....	11-15
7. SPECIAL NOTICES.....	16
ANNEXURE 1: ADDRESS LIST AND CONTACT DETAILS: PROVINCIAL DEPARTMENTS.....	17
ANNEXURE 2: ADDRESS LIST AND CONTACT DETAILS: PUBLIC ENTITIES.....	18
ANNEXURE 3: ADDRESS LIST AND CONTACT DETAILS: PROVINCIAL TREASURY TENDER ADVISE CENTRES .....	19
ANNEXURE 4: ADDRESS LIST AND CONTACT DETAILS: SATELLITE OFFICES .....	20
6. SELF REGISTRATION PROCESS.....	21

**REPORT**

**FRAUDULENT & CORRUPT ACTIVITIES ON GOVERNMENT PROCUREMENT SYSTEM**

---

**National Anti-Corruption @ 0800 701 701**

**Security and Investigating Services – Limpopo Provincial Treasury @ 015 298 7196**

---

**ALL COMPLAINTS/CONCERNS RELATED TO SCM NON-COMPLIANCE MUST BE REPORTED TO:**

**LIMPOPO PROVINCIAL TREASURY**

**PRIVATE BAG X 9486**

**POLOKWANE**

**0700**

**PROVINCIAL TREASURY, FINANCE HOUSE, 56 – 58 PAUL KRUGER STREET, POLOKWANE**

## **2. INSTRUCTIONS**

1. Bidders are advised to read the entire tender bulletin.
2. Tenders for procurement of supplies, services and disposals are categorized as follows:

### **SUPPLIES**

- Accommodation, leasing of
- Audio visual equipment
- Building material
- Chemicals: Agricultural/Forestry/  
Laboratory/Water Care
- Clothing/Textiles
- Computer equipment
- Computer software
- Electrical equipment
- Electronic equipment
- Furniture
- General
- Medical
- Office equipment: Labour-saving devices
- Perishable provisions
- Stationary/printing
- Steel
- Timber
- Vehicle (all types)
- Workshop equipment

### **SERVICES**

- Building
- Civil
- Electrical
- Functional (including cleaning-,  
and security services)
- General
- Maintenance of electrical, mechanical  
equipment and plumbing
- Mechanical
- Professional
- Repair and maintenance of vehicles
- Transport

### **DISPOSALS**

- Clothing and textiles
- Furniture
- General
- Scrap metal
- Vehicles

3. Bid documents are generally available in English only.
4. The address where a bid document is available from and where it must be submitted to may differ.
5. The addresses at which bid documents may be obtained and to which tenders must be posted, appear in Annexure 1.
6. The address list of various Supply Chain Management Advice Centres at which bid documents and tender bulletins may also be obtained, appear in Annexure 3; and
7. The address list of Supply Chain Management satellite offices at which tender bulletins may also be obtained, appear in

**3. BID INVITATIONS FOR SUPPLIES, SERVICES AND DISPOSALS**

BID NO.	DESCRIPTION OF SERVICE OR SUPPLIES	CONTACT DETAILS	BID DOCUMENT PRICE (NON-REFUNDABLE)	DUE AT 11H00	BID DOCUMENTS OBTAINABLE FROM	POST OR DELIVER BIDS TO
					See Annexure 1 & 2, Page 11- 12	

PRDP 38/2019/20	Physical Security Services for all Office of the Premier buildings  <b>Compulsory briefing session:</b> Date: 06 November 2019 Time: 11H00 Venue: Old Cabinet Boardroom, 40 Hans van Rensburg Street, Polokwane  <b>Office of the Premier</b>	<b>ADMINISTRATION PROCESS</b> Mamabolo A @ Tel: 015 287 6000 tenders@premier.limpopo.gov.za  <b>TECHNICAL ASPECTS</b> tenders@premier.limpopo.gov.za	R85-00	18/11/2019	102	102
PRDP 99/2019	Maintenance of Security Systems and Equipment installed in all buildings of the Office of the Premier  <b>Compulsory briefing session:</b> Date: 06 November 2019 Time: 14H00	<b>ADMINISTRATION PROCESS</b> Mamabolo A @ Tel: 015 287 6000 tenders@premier.limpopo.gov.za  <b>TECHNICAL ASPECTS</b> tenders@premier.limpopo.gov.za	R85-00	18/11/2019	102	102

**LIMPOPO PROVINCIAL TENDER BULLETIN NO 28 OF 2019/20 FY, 18 OCTOBER 2019**

	Venue: Old Cabinet Boardroom, 40 Hans van Rensburg Street, Polokwane					
	<b>Office of the Premier</b>					
COGHSTA B09/2019-20 FY	Establishment of Database for professional service providers (Land Surveyors) to provide land surveying services for township establishment and formalization of informal settlements over a period of three years from 2019/20 until 2021/22 financial years	<p><b>ADMINISTRATION PROCESS</b>  Masemola SS @  Tel: 015 294 2024  masemolass@coghsta.limpopo.gov.za</p> <p><b>TECHNICAL ASPECTS</b>  Mogotsi KP @  Tel: 015 284 5471  mogotsikp@coghsta.limpopo.gov.za</p>	R85-00	20/11/2019	107	107
	<b>Department of Co-Operative, Human Settlements &amp; Traditional Affairs</b>					

**4. CANCELLED BIDS**

**4.1 OFFICE OF THE PREMIER**

TENDER BULLETIN NO	BID NO	PROJECT DESCRIPTION	ADVERTISED DATE	CLOSING DATE	REASON FOR CANCELLATION
25 of 2019/20 FY	PRDP 38/2019/20	Physical Security Services for all Office of the Premier buildings	20/09/2019	23/10/2019	Omission in the specification  NB: Bidders who bought the tender document may bring the receipt and the old bid document in exchange of the new bid document

**4.2 LIMPOPO ECONOMIC DEVELOPMENT AGENCY**

TENDER BULLETIN NO	BID NO	PROJECT DESCRIPTION	ADVERTISED DATE	CLOSING DATE	REASON FOR CANCELLATION
26 of 2019/20 FY	LEDA/OSS/ 2019/20-6B	Appointment of a principal contractor/consortium service provider for the refurbishment of Limpopo Tourism Agency (LTA) building for the establishment of Invest SA Limpopo One Stop Shop	04/10/2019	25/10/2019	Material errors in the technical specification

**4.3 VHEMBE TVET COLLEGE**

TENDER BULLETIN NO	BID NO	PROJECT DESCRIPTION	ADVERTISED DATE	CLOSING DATE	REASON FOR CANCELLATION
25 of 2019/20 FY	VTVET 26/2019	New retaining walls, ramps, 2X septic tanks, 2X French drains, storm water drainage and external water supply	27/09//2019	31/10/2019	The bid had already been advertised in the Provincial Tender Bulletin no 20 of 2019/20 FY dated 23 August 2019 as bid no VTVET 17/2019. Briefing session was on 28 August 2019 while closing date was 26 September 2019



**5. ERRATUM**

**5.1 DEPARTMENT OF AGRICULTURE AND RURAL DEVELOPMENT**

TENDER BULLETIN NO.	BID NO	PROJECT DESCRIPTION	DATE ADVERTISED	DATE CLOSED	REASON FOR ERRATUM
24/2019/20	ACDP 18/19	<b>SUPPLY, DELIVERY AND OFFLOADING OF SEEDS AND SEEDLINGS FOR LIMPOPO DEPARTMENT OF AGRICULTURE AND RURAL DEVELOPMENT</b>	20 SEPTEMBER 2019	22 October 2019	There was administration error on requirement on page 26 of the tender document. The correct information should read as <b>“Joint Venture -Must submit Joint Venture Agreement or Power of Attorney in case of Joint”</b> <b>The closing date is still the same: 22 OCTOBER 2019 AT 11H00</b>

TENDER BULLETIN NO.	BID NO	PROJECT DESCRIPTION	DATE ADVERTISED	DATE CLOSED	REASON FOR ERRATUM
25/2019/20	ACDP 19/10	<b>SUPPLY, DELIVERY, OFFLOADING AND PACKAGING FENCING MATERIAL IN THE LIMPOPO PROVINCE FOR A PERIOD OF 3 YEARS</b>	27 SEPTEMBER 2019	29 October 2019	There was administration error on requirement on page 36 of the tender document. The correct information should read as <b>“Joint Venture -Must submit Joint Venture Agreement or Power of Attorney in case of Joint”</b> <b>The closing date is still the same: 29 OCTOBER 2019 AT 11H00</b>

**5.2 VHEMBE TVET COLLEGE**

The Public/Service Providers are hereby notified that Provision of Makespace/Innovation Spaces at Makwarela Campus is Bid No VTVET 32/2019 and not VTVET 31/2019 as published in the Provincial Tender Bulletin no. 25 of 2019/20 dated 27 September 2019.

**6. AWARDED BIDS**

**6.1 DEPARTMENT OF SOCIAL DEVELOPMENT**

**PUBLICATION OF BID RESULTS IN RESPECT OF A BID FOR SUPPLY AND DELIVERY OF FOOD PARCELS TO DESTITUTE INDIVIDUALS AND FAMILIES AT VARIOUS DISTRICTS OF LIMPOPO PROVINCE FOR A PERIOD OF THREE (3) YEARS: COMMENCING FROM THE 01<sup>st</sup> OF OCTOBER 2019 TO 30<sup>th</sup> OF SEPTEMBER 2022 WITH BID: (DSDP 03/19)**

1.1. Date of award is the **01<sup>st</sup> of August 2019**

1.2. The successful bidders are as follows:

**1.2.1. Mosebjadi A Mosebo Supply (Pty) Ltd for Capricorn District: Points Scored = 94,67**

Type	01 <sup>st</sup> Year Price all inclusive	02 <sup>nd</sup> Year Price all inclusive	03 <sup>rd</sup> Year Price all inclusive
Type "B1"	R1,943.90	R2,041.10	R2,143.15
Type "B2"	R2,085.90	R2,190.20	R2,299.70
Type "C1"	R1,560.90	R1,638.95	R1,720.89
Type "C2"	R1,698.40	R1,783.32	R1,872.49

Type "D1"	R1,781.80	R1,870.89	R1,964.43
Type "D2"	R1,639.80	R1,721.79	R1,807.88
Type "E1"	R2,002.50	R2,102.63	R2,207.76
Type "E2"	R1,860.50	R1,953.53	R2,051.20
Transport cost (rate per km)	R4.61	R4.84	R5.08

**1.2.2. Nnenyane Trading cc JV Bennito Investments (Pty) Ltd for Capricorn District: Points Scored = 89,74**

Type	01 <sup>st</sup> Year Price all inclusive	02 <sup>nd</sup> Year Price all inclusive	03 <sup>rd</sup> Year Price all inclusive
Type "B1"	R2,127.05	R2,233.40	R2,345.07
Type "B2"	R2,265.80	R2,379.09	R2,498.04
Type "C1"	R1,575.43	R1,654.20	R1,736.91
Type "C2"	R1,714.18	R1,799.89	R1,889.88

**LIMPOPO PROVINCIAL TENDER BULLETIN NO 28 OF 2019/20 FY, 18 OCTOBER 2019**

Type "D1"	R1,920.24	R2,016.25	R2,117.06
Type "D2"	R1,781.49	R1,870.56	R1,964.09
Type "E1"	R2,059.74	R2,162.73	R2,270.86
Type "E2"	R1,920.99	R2,017.04	R2,117.89
Transport cost (rate per km)	R4.61	R4.84	R5.08

**1.2.3. Palebra Construction and Supplies for Sekhukhune District: Points scored = 92,63**

Type	01 <sup>st</sup> Year Price all inclusive	02 <sup>nd</sup> Year Price all inclusive	03 <sup>rd</sup> Year Price all inclusive
Type "B1"	R2,050.00	R2,152.50	R2,260.13
Type "B2"	R2,194.00	R2,303.70	R2,418.89
Type "C1"	R1,616.68	R1,697.51	R1,782.39
Type "C2"	R1,780.07	R1,869.07	R1,962.53
Type "D1"	R1,896.00	R1,990.80	R2,090.34
Type "D2"	R1,752.00	R1,839.60	R1,931.58
Type "E1"	R2,112.00	R2,217.60	R2,328.48
Type "E2"	R1,968.00	R2,066.40	R2,169.72
Transport cost (rate per km)	R3.00	R3.15	R3.31

**1.2.4. Makhoseni Trading and Projects (Pty) Ltd for Sekhukhune District: Points scored = 88,16**

Type	01 <sup>st</sup> Year Price all inclusive	02 <sup>nd</sup> Year Price all inclusive	03 <sup>rd</sup> Year Price all inclusive
Type "B1"	R2,097.94	R2,202.84	R2,312.98
Type "B2"	R2,288.56	R2,402.99	R2,523.14
Type "C1"	R1,616.68	R1,697.51	R1,782.39
Type "C2"	R1,780.07	R1,869.07	R1,962.53
Type "D1"	R1,949.90	R2,047.40	R2,149.76
Type "D2"	R1,786.52	R1,875.85	R1,969.64
Type "E1"	R2,142.23	R2,249.34	R2,361.81
Type "E2"	R1,978.85	R2,077.79	R2,181.68
Transport cost (rate per km)	R4.61	R4.84	R5.08

**1.2.5. Nemuko Trading and Projects (Pty) Ltd for Vhembe District: Points scored = 99,84**

Type	01 <sup>st</sup> Year Price all inclusive	02 <sup>nd</sup> Year Price all inclusive	03 <sup>rd</sup> Year Price all inclusive
Type "B1"	R1,916.58	R2,012.41	R2,113.03
Type "B2"	R2,071.74	R2,175.33	R2,284.09
Type "C1"	R1,578.42	R1,657.53	R1,740.41
Type "C2"	R1,733.73	R1,820.42	R1,911.44
Type "D1"	R1,787.40	R1,876.77	R1,970.61
Type "D2"	R1,632.30	R1,713.92	R1,799.61
Type "E1"	R2,028.92	R2,130.37	R2,236.88
Type "E2"	R1,862.94	R1,956.09	R2,053.89
Transport cost (rate per km)	R3.16	R3.32	R3.48

**1.2.6. Thendowanga Trading 3 (Pty) Ltd for Vhembe District: Points scored = 100,00**

Type	01 <sup>st</sup> Year Price all inclusive	02 <sup>nd</sup> Year Price all inclusive	03 <sup>rd</sup> Year Price all inclusive
Type "B1"	R1,916.58	R2,012.41	R2,113.03
Type "B2"	R2,071.74	R2,175.33	R2,284.09
Type "C1"	R1,578.60	R1,657.53	R1,740.41
Type "C2"	R1,733.76	R1,820.45	R1,911.47
Type "D1"	R1,787.40	R1,876.77	R1,970.61
Type "D2"	R1,632.30	R1,713.92	R1,799.61
Type "E1"	R2,018.10	R2,119.01	R2,224.96
Type "E2"	R1,863.00	R1,956.15	R2,053.96
Transport cost (rate per km)	R3.16	R3.32	R3.48

**1.2.7. Naene Trading Enterprise for Mopani District: Points scored = 100,00**

Type	01 <sup>st</sup> Year Price all inclusive	02 <sup>nd</sup> Year Price all inclusive	03 <sup>rd</sup> Year Price all inclusive
Type "B1"	R1,916.58	R2,012.41	R2,113.03
Type "B2"	R2,071.79	R2,175.38	R2,284.15
Type "C1"	R1,584.86	R1,664.10	R1,747.31
Type "C2"	R1,733.76	R1,820.45	R1,911.47

**LIMPOPO PROVINCIAL TENDER BULLETIN NO 28 OF 2019/20 FY, 18 OCTOBER 2019**

Type "D1"	R1,800.96	R1,891.01	R1,985.56
Type "D2"	R1,642.76	R1,724.90	R1,811.14
Type "E1"	R2,018.40	R2,119.38	R2,225.35
Type "E2"	R1,875.81	R1,969.60	R2,068.08
Transport cost (rate per km)	R3.16	R3.32	R3.48

**1.2.8. Tshemollo Trading for Mopani District: Points scored = 83,64**

Type	01 <sup>st</sup> Year Price all inclusive	02 <sup>nd</sup> Year Price all inclusive	03 <sup>rd</sup> Year Price all inclusive
Type "B1"	R2,148.68	R2,256.11	R2,368.92
Type "B2"	R2,312.07	R2,427.67	R2,549.06
Type "C1"	R1,616.68	R1,697.51	R1,782.39
Type "C2"	R1,780.07	R1,869.07	R1,962.53
Type "D1"	R1,949.90	R2,047.40	R2,149.76
Type "D2"	R1,786.52	R1,875.85	R1,969.64
Type "E1"	R2,142.23	R2,249.34	R2,361.81
Type "E2"	R1,978.85	R2,077.79	R2,181.68
Transport cost (rate per km)	R4.61	R4.84	R5.08

**1.2.9. MSH Trading Enterprise cc for Waterberg District: Points scored = 87,92**

Type	01 <sup>st</sup> Year Price all inclusive	02 <sup>nd</sup> Year Price all inclusive	03 <sup>rd</sup> Year Price all inclusive
Type "B1"	R2,096.70	R2,201.54	R2,311.61
Type "B2"	R2,288.05	R2,402.45	R2,522.58
Type "C1"	R1,616.68	R1,697.51	R1,782.39
Type "C2"	R1,780.07	R1,869.07	R1,962.53
Type "D1"	R1,949.90	R2,047.40	R2,149.76
Type "D2"	R1,786.52	R1,875.85	R1,969.64
Type "E1"	R2,142.23	R2,249.34	R2,361.81
Type "E2"	R1,978.85	R2,077.79	R2,181.68
Transport cost (rate per km)	R4.61	R4.84	R5.08

**1.2.10. Mazaxa Construction and Projects for Waterberg District Points scored = 87,79**

<b>Type</b>	<b>01<sup>st</sup> Year Price all inclusive</b>	<b>02<sup>nd</sup> Year Price all inclusive</b>	<b>03<sup>rd</sup> Year Price all inclusive</b>
Type "B1"	R2,097.94	R2,202.84	R2,312.98
Type "B2"	R2,288.56	R2,402.99	R2,523.14
Type "C1"	R1,616.68	R1,697.51	R1,782.39
Type "C2"	R1,780.07	R1,869.07	R1,962.53
Type "D1"	R1,949.90	R2,047.40	R2,149.76
Type "D2"	R1,786.52	R1,875.85	R1,969.64
Type "E1"	R2,142.23	R2,249.34	R2,361.81
Type "E2"	R1,978.85	R2,077.79	R2,181.68
Transport cost (rate per km)	R4.61	R4.84	R5.08

**7. SPECIAL NOTICES**

**7.1. LIMPOPO PROVINCIAL TREASURY**

**7.1.1 (SCM ADVICE CENTERS):  
ADVERTISEMENTS OF LIMPOPO CSD CALL CENTRE LINES FOR SUPPLIERS**

**LIMPOPO CSD CALL CENTRE LINES FOR SUPPLIERS**

DISTRICT	CALL CENTRE NUMBER	OFFICIAL RESPONSIBLE	TIME
Capricorn	015 291 2684	Mr. Kgomo AE	07H30 TO 16H30
Mopani	015 812 0256	Ms. Nxumalo P	07H30 TO 16H30
Sekhukhune	013 265 1071	Mrs Morena MM	07H30 TO 16H30
Vhembe	015 962 0014	Mrs. Nefolovhodwe MQ	07H30 TO 16H30
Waterberg	014 717 1376	Mrs. Tsatsi AT	07H30 TO 16H30

**7.1.2 SCM Advice Centres**

**THE ADVERTISEMENT OF WORKSHOPS/ROADSHOWS AS PER DISTRICT:**

**VHEMBE SUPPLY CHAIN MANAGEMENT ADVICE CENTRE**

(Centralized Supplier Procurement Workshop program)

DATE	MUNICIPALITY	VENUE	TARGET	TIME
24/10/2019	Thulamela	Thohoyandou Indoor Sport Centre	MVAs	10H00

**MOPANI SUPPLY CHAIN MANAGEMENT ADVICE CENTRE**

(Centralized Supplier Procurement Roadshow program)

DATE	MUNICIPALITY	VENUE	TARGET	TIME
24/10/2019	Giyani	LPT Boardroom	Disability	10H00

**SEKHUKHUNE SUPPLY CHAIN MANAGEMENT ADVICE CENTRE**

(Centralized Supplier Procurement Workshop program)

DATE	MUNICIPALITY	VENUE	TARGET	TIME
24/10/2019	Ephraim Mogale	Dichoeung	Rural Sup	10H00



**LIMPOPO PROVINCIAL TENDER BULLETIN NO 28 OF 2019/20 FY, 18 OCTOBER 2019**

**ANNEXURE 1: ADDRESS LIST AND CONTACT DETAILS: LIMPOPO PROVINCIAL DEPARTMENTS**

UNIQUE REF. NO.	BID DOCUMENT REFERENCE	CONTACT DETAILS	DOCUMENTS SOLD AT:	DOCUMENTS DEPOSITED AT
100	DSDP	Tel: 015 293 6000 Fax: 015 293 6211 Website: <a href="http://www.limpopo.gov.za">www.limpopo.gov.za</a>	<b>Department of Social Development</b> , Office No. 57 Ground Floor, 21 Biccadd Street POLOKWANE	Deposited in the box located at Department of Social Development, 21 Biccadd Street Polokwane
101	LPT	Tel: 015 298 7000 Fax: 015 295 7010 Website: <a href="http://www.limpopo.gov.za">www.limpopo.gov.za</a>	<b>Provincial Treasury</b> 46 Hans Van Rensburg Street, POLOKWANE and all Provincial Treasury Tender Advice Centres	Deposited in the bid box located outside a guard house at Ismini Towers, 46 Hans Van Rensburg Street, Polokwane
101A	TC/LP	Tel: 015 291 8400 Fax: 015 295 3310 Website: <a href="http://www.limpopo.gov.za">www.limpopo.gov.za</a>	<b>Provincial Treasury</b> 56 – 58 Paul Kruger Street, POLOKWANE and all Provincial Treasury Tender Advice Centres	Deposited in the bid box located in the main entrance, Finance House Building, 56-58 Paul Kruger Street, Polokwane
102	PRDP	Tel: 015 287 6000 Fax: 015 295 3840 Website: <a href="http://www.limpopo.gov.za">www.limpopo.gov.za</a>	<b>Office of the Premier</b> , 40 Hans van Rensburg Street, POLOKWANE and all SCM Advice Centres	Deposited in the bid box located at Mowaneng Building, 40 Hans van Rensburg Street, Polokwane
103	HEDP	Tel: 015 293 6000 Fax: 015 293 6211 Website: <a href="http://www.limpopo.gov.za">www.limpopo.gov.za</a>	<b>Department of Health</b> , Office No. D3 Ground Floor, Old Capricorn Building, 18 College Street, POLOKWANE and all Provincial Treasury Tender Advice Centres	Deposited in the box located at Department of Health and Social Development, 18 College Street, Polokwane
104	LPEDT	Tel: 015 290 7600/1 Fax: 015 297 4494 Website: <a href="http://www.limpopo.gov.za">www.limpopo.gov.za</a>	<b>Department of Education</b> , Corner 113 Biccadd and 24 Excelsior Streets, POLOKWANE and all Provincial Treasury Tender Advice Centres	Deposited in the bid box located in the main entrance of corner 113 Biccadd Street and Excelsior Street, Polokwane
105	PUDP	Tel: 015 295 1000 Fax: 015 295 1163 Website: <a href="http://www.limpopo.gov.za">www.limpopo.gov.za</a>	<b>Department of Roads &amp; Transport</b> , 40 Paul Kruger Street, POLOKWANE and all Provincial Treasury Tender Advice Centres	Deposited in the bid box located at 1 <sup>st</sup> Floor, Paul Kruger Wing, 40 Paul Kruger Street, Polokwane
106	DSSL	Tel: 015 290 2900 Fax: 015 291 4452 Website: <a href="http://www.limpopo.gov.za">www.limpopo.gov.za</a>	<b>Department of Safety, Security and Liaison</b> , 32 Schoeman Street, POLOKWANE and all Provincial Treasury Tender Advice Centres	Deposited in the bid box located in the main entrance of 32 Schoeman Street, Polokwane
107	COGHSTA	Tel: 015 294 2000 Fax: 015 295 4190 Website: <a href="http://www.limpopo.gov.za">www.limpopo.gov.za</a>	<b>Department of Co-Operative Governance, Human Settlements &amp; Traditional Affairs</b> , 28 Market Street, Office No. G 74, Ground Floor, Polokwane.	Deposited in the bid box located at Hensa Towers, Cnr of Rabe and Landdros Mare Streets, Polokwane
108	DSAC	Tel: 015 284 4000 Fax: 015 284 4514 Website: <a href="http://www.limpopo.gov.za">www.limpopo.gov.za</a>	<b>Department of Sport, Arts and Culture</b> Olympic Towers, Corner Rabe and Biccadd Street, POLOKWANE and all Provincial Treasury Tender Advice Centre	Deposited in the bid box located in the main entrance of Olympic Towers, Corner 21 Rabe and Biccadd Street, Polokwane
109	LEDET	Tel: 015 293 8300 Fax: 015 293 8319 Website: <a href="http://www.limpopo.gov.za">www.limpopo.gov.za</a>	<b>Department of Economic Development, Environment &amp; Tourism</b> , 90 Bok Street, POLOKWANE and all SCM Advice Centres	Deposited in the bid box located in the main entrance of Evridiki Towers, 19 Biccadd Street, Polokwane
110	LDPW & WODP	Tel: 015 284 7000 Fax: 015 284 7031 Website: <a href="http://www.limpopo.gov.za">www.limpopo.gov.za</a>	<b>Department of Public Works, Roads and Infrastructure</b>  ; Towers, 43 Church Street, POLOKWANE and all Provincial Treasury Tender Advice Centres	Deposited in the bid box located at Corner Blaawberg and River Street Ladanna Polokwane 0699 Private Bag X9490 Polokwane 0700
111	ACDP	Tel: 015 294 3000/30/60/90/20 Fax: 015 294 4506 Website: <a href="http://www.limpopo.gov.za">www.limpopo.gov.za</a>	<b>Department of Agriculture</b> , Temo Towers, 69 Biccadd Street, POLOKWANE and all Provincial Treasury Tender Advice Centres	Deposited in the bid box located in the main entrance of AgriVillage, 69 Biccadd Street, Polokwane

**LIMPOPO PROVINCIAL TENDER BULLETIN NO 28 OF 2019/20 FY, 18 OCTOBER 2019**

**ANNEXURE 2: ADDRESS LIST AND CONTACT DETAILS: LIMPOPO PUBLIC ENTITIES**

UNIQUE REF. NO.	BID DOCUMENT REFERENCE	CONTACT DETAILS	DOCUMENTS SOLD AT:	DOCUMENTS DEPOSITED AT
112	RFB: LIMP	Tel: 015 293 3621 Fax: 015 293 3660 Website: <a href="http://www.golimpopo.co">www.golimpopo.co</a>	<b>State Information Technology Agency (SITA)</b> Limpopo Office, Moolman Building, 27 Market Street, POLOKWANE, 0699	Bid box located in the Main Entrance of Moolman Building, 27 Market Street, Polokwane
113	LTA	Tel: 015 293 3600 Fax: 015 293 3655 Website: <a href="http://www.golimpopo.com">www.golimpopo.com</a>	<b>Limpopo Tourism Agency</b> , ERF 92/688, Portion 2 Southern Gateway, Ext 4, N1 Main Road, Polokwane 0699	Bid box located in the offices ERF 92/688, Portion 2 Southern Gateway, Ext 4, N1 Main Road, Polokwane 0699
114	LGB	Tel: 015 295 5581 Fax: 015 295 3566 Website: <a href="http://www.lgb.org">www.lgb.org</a>	<b>Limpopo Gambling Board</b> , 22 Schoeman Street, POLOKWANE, from 08H30 to 16H00	Bid box located in the main entrance, ground floor, 22 Schoeman Street, Polokwane
115	LEDA	Tel: 015 633 4700 Fax: 015 633 4854 Website: <a href="http://www.leda.co.za">www.leda.co.za</a>	<b>Limpopo Economic Development Agency</b> Enterprise Development Finance, Main Road Lebowakgomo	Bid box located in the main entrance, Enterprise Development Finance, Main Road Lebowakgomo
116	RAL	Tel: 015 284 4600 Fax: 015 284 4701 Website: <a href="http://www.ral.co.za">www.ral.co.za</a>	<b>Road Agency Limpopo (RAL)</b> , RAL Towers, 26 Rabe Street, POLOKWANE, 0700	Bid box located in the entrance foyer (ground floor) of RAL Towers, at 26 Rabe Street, Polokwane
117	GAAL	Tel: 015 288 0122 Fax: 015 288 0346 Website: <a href="http://www.gaal.co.za">www.gaal.co.za</a>	<b>Gateway Airports Authority Limited</b> , N1 Road to Louis Trichardt, Army Base, POLOKWANE International Airport, Polokwane, 0700	Bid box located in the main entrance, ground floor of administration building, Polokwane International Airport, Army Base
118	VIVET	Tel: 015 963 3156 Fax: 015 963 3154 Website: <a href="mailto:www.fetcol@mweb.co.za">www.fetcol@mweb.co.za</a>	<b>Vhembe FET College</b> , Stand No. 203, Unit A, Sibasa, 0970, Limpopo Province	Vhembe Fet College, Central Office, Private Bag X2136, SIBASA 0970
119	WTVET	Tel: 015 491 8581/8602 Fax: 015 491 8579 Website: <a href="mailto:www.procurement@waterbergcollege.co.za">www.procurement@waterbergcollege.co.za</a>	<b>Waterberg FET College</b> , Central Office, 36 Hooge Street Street, Mokopane, 0600	<b>Waterberg FET College</b> , Central Office, 36 Hooge Street Street, Mokopane, Private Bag x 2449, Mokopane 0600
120	GNT	Tel. 015 291 2641 Fax. 015 291 2648	No. 130a Marshall Street, Polokwane.0700	Great North Transport No. 130 Marshall Street, Polokwane.0700
122	MT	Tel. 015 2907715/7772	<b>Mvula Trust</b> 25 Rhodesdrift Street, Rhodesdrift Office Park, Bendor Ext 30, Polokwane	<b>Mvula Trust</b> 25 Rhodesdrift Street, Rhodesdrift Office Park, Bendor Ext 30, Polokwane
123	CCTVET	Tel.015 230 1800 Fax. 015 291 2767	Capricorn College for TVET 16 Market Street, Polokwane	Private Bag Bag X9674 Polokwane0700
124	IDT	Tel: 015 295 0000 Fax: 015 295 6559	<b>Independent Development Trust</b> 22 Hans van Rensburg Street, Polokwane, 0700	<b>Independent Development Trust</b> P.O.Box 55386 Polokwane 0700

**ANNEXURE 3: ADDRESS LIST AND CONTACT DETAILS: PROVINCIAL TREASURY TENDER ADVICE CENTRES**

(Tender bulletins and bid documents are obtainable from the following Centers):

<b>PROVINCIAL TREASURY SUPPLY CHAIN MANAGEMENT ADVICE CENTRES</b>	
<p><b>HEAD OFFICE</b></p> <p>Provincial Supply Chain Management Office 56 – 58 Paul Kruger Street POLOKWANE Private Bag x9494 <b>POLOKWANE, 0700</b> <b>Tel No. (015) 291 8400</b></p> <p>Contact: <b>Ms. M.B Rakubu @ Tel: 015 291 8717/6</b></p>	<p><b>Capricorn SCM Advice Centre</b></p> <p>Limpopo Provincial Treasury 56-58 Paul Kruger Street Private Bag x9494 <b>POLOKWANE, 0700</b> <b>Tel No. (015) 291 8400</b></p> <p>Contact Person: <b>Ms. M.M. Masindi</b></p>
<p><b>Vhembe SCM Advice Centre</b></p> <p>Limpopo Provincial Treasury Government Building Complex BLOCK E GROUND FLOOR <b>THOHOYANDOU, VENDA</b> Tel: (015) 962 1752 Fax: (015) 962 1282</p> <p>Contact Person: <b>Ms. A Manena</b></p>	<p><b>Mopani SCM Advice Centre</b></p> <p>Limpopo Provincial Treasury Private Bag X 1973 <b>GIYANI, 0826</b> Tel: (015) 812 0149 Fax: 086 219 7905</p> <p>Contact Person: <b>Mr. G Muravha</b></p>
<p><b>Waterberg SCM Advice Centre</b></p> <p>Limpopo Provincial Treasury 98 Nelson Mandela Street Decimale Building <b>MODIMOLLE</b> Tel: (014) 717 5837 Fax: (014) 717 5670</p> <p>Contact Person: <b>Mr. AT Tsatsi</b></p>	<p><b>Sekhukhune SCM Advice Centre</b></p> <p>Limpopo Provincial Treasury Lefa Centre, Schoonoord Road <b>JANE FURSE</b> Tel: (013) 265 1344 Fax: (013) 265 1354</p> <p>Contact Person: <b>Mr. M. S. Sehale</b></p>

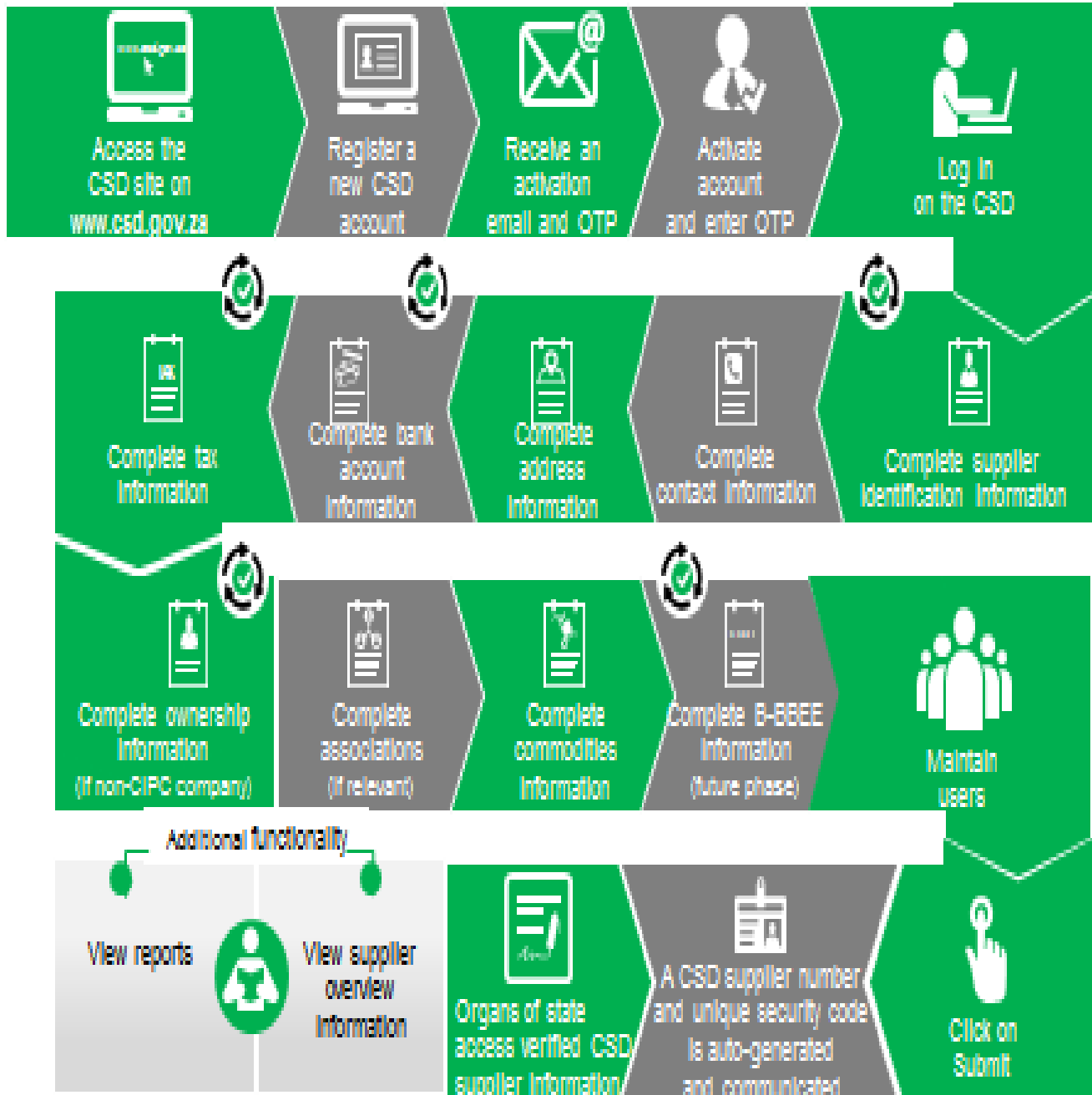
**LIMPOPO PROVINCIAL TENDER BULLETIN NO 28 OF 2019/20 FY, 18 OCTOBER 2019**

**ANNEXURE 4: ADDRESS LIST AND CONTACT DETAILS: SATELLITE OFFICES**

(Tender bulletins are obtainable from the following centers)

CAPRICORN	VHEMBE	MOPANI	WATERBERG	SEKHUKHUNE
			Libsa Thabazimbi: No.08 Riet Bok Street Tel. No. (014) 772 2437	
			Libsa Lephale No. 3A Venter Street Tel. No. (014) 763 2834	

# Supplier Self-Registration Process



Auto verification of supplier information with SARS, GPC etc.